

# Penghu Travel Map



## A dazzling string of pearls scattered across the Taiwan Strait!

Located in the heart of the Taiwan Strait, Penghu is an island realm caressed by sea breezes and embraced by sunshine. Over millions of years, its basalt landscape has been shaped into magnificent wonders, leaving nature's indelible brushstrokes across the archipelago. Penghu inspires awe not only with its majestic landscapes but also with its rich cultural heritage. From temple traditions, Minnan-style houses, and military relics to age-old fishing practices and seafood cuisine, the islands preserve the wisdom and culture passed down through generations. Here, azure waters meet golden beaches and towering basalt cliffs, weaving together a seascape of striking beauty. Penghu is more than an island—it is a timeless ocean poem, inviting every traveler to linger, discover, and carry its memories home.



### Travel Information Services

Service Center	Tel
Penghu Airport Visitor Information Center	06-9228115
Penghu Visitor Center	06-9216445
Penghu South Visitor Center	06-9264738
Qitou Visitor Center	06-9931527
Penghu North Sea Visitor Center	06-9933082
Houliao Visitor Center	06-9933437
Yuwendao Visitor Center	06-9982830
Jibei Visitor Center	06-9911487
Xiaomen Geological Exploration Hall	06-9982988
Xiuyu Western Fortress Visitor Center	06-9981577
Wang'an Green Turtle Tourism and Conservation Center	06-9991368
Qimei Visitor Center	06-9971954

**Tourism Administration, MOTC.**  
Penghu National Scenic Area Headquarters  
Address: No. 171, Guanghua Village, Magong City, Penghu County 880024  
Official Site: Tel: 06-9216521 Fax: 06-9216541



### Penghu South Sea Recreation System

The South Sea Recreation System is often praised as Penghu's hidden paradise. Here, the majestic columnar basalt formations of Tongpan and Hujing Islands reveal extraordinary geological wonders, while Wang'an Island serves as an important habitat for green sea turtles. Blending village culture with grassland ecology, the southernmost Qimei Island is famed for the "Seven Scenic Wonders of Qimei," with the Twin Hearts Stone Weir as its most iconic landmark. A leisurely journey through the southern islands reveals rugged mountains, vast seascapes, and humble fishing villages, offering a romantic and restorative island experience.

#### E4 Hujing Island



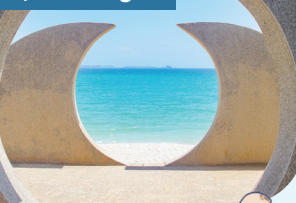
South of Tongpan Island, the landscape unfolds with a flat center and raised ends, where continuous stretches of basalt columns resemble a vast work of natural sculpture. At low tide, visitors can gaze out toward Hujing Chengguan, where emerald waves shimmer. Counted among the "Eight Views of Penghu," it is one of Penghu's most celebrated scenic spots. Climbing the Xishan Trail, travelers encounter the serene White Stone Guanyin statue alongside remnants of Japanese wartime trenches. Nearby, the Tropic of Cancer landmark and the "Twin Hearts in Embrace" twin-heart installation create a romantic and leisurely atmosphere, perfect for savoring the charms of an island holiday.

#### D4 Tongpan Island Geopark



As one of Penghu's most magnificent islands of columnar basalt, it has earned the reputation of being the "Yellowstone of Penghu." The island is encircled by striking basalt columns, their joints clearly defined. Shaped by centuries of wind and waves, many have taken on smooth, rounded forms. On the southwest coast, concentric lava formations can be seen, their central rise resembling a lotus platform. With the ebb and flow of the tides, this rare geological wonder appears and disappears, creating a sight unique to Penghu.

#### F3, 4 Wang'an



Renowned for its serene island scenery, this area is also an important nesting ground for green sea turtles, drawing countless nature lovers each year. The island preserves a wealth of cultural and natural treasures, from the historic stone houses of Tantai Shan Community and the sandy shores of Wangankou Beach to the centuries-old stone houses of Zhongshe Village. Blending eco-tourism with cultural exploration, it is a beautiful offshore retreat, ideal for leisurely strolls and quiet wanderings.

#### H2, 3 Qimei



Located at the southernmost tip of the Penghu Archipelago, the island is famed for its majestic basalt landscape and the iconic Twin Hearts Stone Weir, a symbol of eternal love. The island is home to unique rock formations such as Wangku Rock, Little Taiwan, and Longcheng, each telling stories of captivating legends and geological beauty. The coral reefs of Qimei are a paradise for snorkeling, offering a journey that blends natural ecology, cultural heritage, and romantic seascapes.

### Penghu North Sea Recreation System

The Penghu North Sea Recreation System encompasses both the North and East sub-systems. The Penghu North Sea Recreation System covers islands such as Jibei, Mudou, and Gupo, with golden shell-sand beaches and crystal-blue waters ideal for a wide range of water activities. The Penghu East sub-system includes Yuanbei, Niao, Dinggou, and Jishan Islands, where striking basalt formations create a dramatic landscape. These islands also serve as vital breeding habitats for seabirds, showcasing the richness of Penghu's marine ecology.

#### A5 Mudou Islet



At Penghu's northern tip, dramatic basalt formations rise from the emerald waters, offering unobstructed views of the undersea world. Whether exploring the island or simply gazing upon the endless sea and sky, visitors are embraced by the healing power of nature. The island's white lighthouse stands watch over the sea; bathed in the glow of sunrise or sunset, it creates a breathtaking sight haven for photographers and travelers alike.

#### B5 Jibei Island



Jibei Island itself lies like a hidden dragon in the sea, renowned for its striking "sand tail." Shaped and reshaped by the tides, this ribbon of pure white sand stretches gracefully into the ocean, fine as snow and breathtakingly beautiful. The island is also home to the largest concentration of stone weirs in Penghu. Stone weirs are ingenious fish traps built by early settlers using tidal differences, basalt, and coral reefs. Still preserved today, they stand as a cultural landscape that bears witness to the wisdom and heritage of traditional fishing villages. A trip to Jibei is more than a seaside escape—it is an encounter with the intertwined wonders of nature and culture.

#### C5 Yuanbei Islet



Named for its shell-like shape, the northern coast is lined with magnificent basalt columns, forming natural wonders such as Stone Pen, Stone Drum, the Wordless Heavenly Book, and Ink Stone. The sea cliffs on the northeast side resemble pleated skirts and have been designated as the Columnar Basalt Nature Reserve. When the tide recedes, coral reefs and seabeds are laid bare, revealing a rich intertidal ecosystem—one of the most enchanting marine landscapes.

#### C5 Peng Peng Beach



Formed by ocean currents, this natural sandbar is composed of coral fragments, shells, and quartz. Its shape resembles a white dragon, earning it the nickname "Living Dragon Beach." At low tide, visitors can wade across the shallows to reach Bird Island. The area is also an important seabird sanctuary. From April to October, it becomes a vital breeding ground for roseate terns and great crested terns.

### Introduction to Magong Main Island



#### D5 Aimen Lintou Beach



Linked by Aimen, Lintou, and Jianshan, the crescent-shaped golden bay is one of Penghu's most enchanting summer landscapes. With soft white sands and clear blue waters, it is perfect for swimming, water activities, and seaside adventures. A shaded trail invites visitors to wander at a leisurely pace—feet sinking into warm sand, ears filled with the sound of the sea breeze—embracing the slow rhythm of island life.

#### D5 Penghu Visitor Center



Located in Magong City, the Penghu Visitor Center combines exhibitions, guided services, and travel consultation. It also features multifunctional experience spaces and audiovisual facilities, offering visitors a wealth of information and immersive sensory experiences. It is the perfect starting point for discovering Penghu's natural ecology and cultural charm, and the ideal first stop of any journey.

#### D4 Fenggui Cave



Fenggui Cave, located on the southern coast of Penghu, is a sea trench and cave carved into basalt cliffs by centuries of relentless wave erosion. At high tide, when powerful waves crash against the shore, the roar echoes like thunder and jets of seawater shoot several meters into the air through the rock's openings. This awe-inspiring spectacle is the origin of the name "Fenggui."

#### D3 Xiuyu Western Fort



At the southern tip of Xiuyu lies the Xiuyu Western Fort, one of the best-preserved Qing dynasty forts in Taiwan. Covering more than eight hectares, it retains features such as the outer gate and cannon emplacements. Designated as a national historic site, the fort stands as a powerful reminder of Penghu's role as a strategic maritime stronghold and a testament to its military heritage.

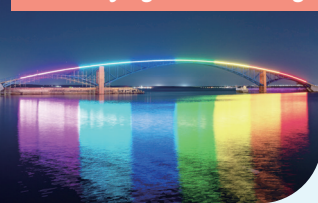
#### D6 Guoye Sunrise Tower



In Guoye Village, the simple character of a traditional fishing community lingers in every corner. Yet the most moving sight comes at dawn. As night slowly turns to light, clouds are brushed with shades of pink, and the rising sun illuminates the weathered stone weirs in the sea. In the distance, the silhouette of the Central Mountain Range emerges faintly on the horizon. This breathtaking view rightfully secures its place among the "Eight Scenic Views of Ancient Penghu."

Penghu's main island group, composed of Magong, Huxi, Baisha, and Xiuyu, is centered around Magong City, the hub of tourism. Here visitors find dining, accommodations, rentals, and local specialties alongside rich geological features, historic relics, traditional settlements, forts, and wartime trenches. Together with dramatic natural scenery and diverse ecological resources, these elements create an unforgettable destination that blends culture, history, and nature. From the historic Tianhou Temple and the golden sands of Aimen-Lintou, to Xiaomen Islet, Erkan Village, and Xiuyu Western Fort, each destination reveals the unique island charm and depth of travel experiences found on Penghu's main island.

#### Db41 Xiying Rainbow Bridge



#### Db41 Guanyin Pavilion (Guanyinting)



#### Dc42 Tianhou Temple

Penghu Tianhou Temple is the oldest Mazu temple in Taiwan, dedicated to the Golden-Faced Mazu. Its architectural layout is composed of three main halls—front, central, and rear—flanked by side wings on both sides. Inside, the plaque of the Shanchuan Hall is finely carved, while the central hall's door panels feature motifs symbolizing blessings through the four seasons, showcasing the masterful craftsmanship of traditional artisans. More than just a landmark of Magong, Tianhou Temple stands as the spiritual heart of Penghu and a lasting symbol of local faith and culture.

#### C4 Daguoeye Columnar Basalt



Guanyin Pavilion (Guanyinting) is dedicated to the South Sea Guanyin Bodhisattva. The temple's architecture is simple yet elegant, and its serene setting enhances its sacred atmosphere. In front of the temple stand two unique stone lions, crafted with a rare technique using glutinous rice paste, lime, and molasses—an extraordinary cultural treasure found nowhere else in Taiwan. Directly in front of the temple lies the popular Guanyinting Recreation Area. It not only provides facilities for sailing and canoe training but is also renowned as the best spot to admire Penghu's breathtaking sunsets and the spectacular Penghu International Fireworks Festival. Within the area stands the Xiying Rainbow Bridge, which glows with vibrant colors at night. Its lights reflected on the water create a dazzling spectacle that lingers in memory.

#### Dc42 Central Old Street



Next to Tianhou Temple lies Central Old Street, the earliest developed commercial district in Penghu. Stretching just about 200 meters, it is lined with cultural landmarks such as the Taixia Guild Hall, Touch-Breast Alley, Four-eyed Well, Shijong Temple, and Wanjun Well, making it a historic street of exceptional cultural and tourism value.

At Daguoeye, majestic columnar basalt formations rise along the coast. The hexagonal pillars stretch like the keys of a piano, composing a poetic harmony with sea and sky. After rain, their reflections add an air of mystery, making this one of Penghu's most spectacular geological wonders. It is also an ideal place for promoting geoscience education and immersive travel. Strolling among these natural sculptures leaves visitors captivated and reluctant to leave.

#### C4 Tongliang Great Banyan



#### C4 Xiaomen Geological Exploration Hall



#### C4 Erkan Community



#### C4 Penghu Great Bridge



#### D3 Yuwendao Lighthouse



#### C5 Beiliiao Kuibishan



In front of Bao'an Temple in Tongliang Village, Baisha Township, stands a natural wonder that has endured for over 300 years. At first glance it seems like a grove of banyans, but all the trees stem from a single ancient trunk. Over time, the branches have grown dense and sprawling, creating Penghu's most spectacular canopy and a living symbol of nature's resilience and vitality.

The Xiaomen Geological Exploration Hall encapsulates Penghu's precious geological history. With well-designed facilities that blend interactive exhibits and guided interpretation, it leads visitors into the volcanic landscapes and natural evolution of the islands, offering an experience that feels like a journey through time.

Erkan Community is the first traditional settlement in Taiwan to be officially designated for preservation. With its red-tiled roofs and whitewashed walls, rows of Minnan-style houses form a timeless scene. Restored old houses have been transformed into eateries serving nostalgic flavors, craft workshops, and creative spaces, carrying forward the wisdom and memories of past generations. Wandering through its alleys, one feels the quiet passage of time and the profound charm of history, culture, and architecture.

Once the longest trans-oceanic bridge in East Asia, the Penghu Great Bridge Links Baisha and Xiuyu Islands and stands as one of Penghu's most iconic landmarks. Strolling along its span, visitors can admire waves crashing against the shore, while cycling across with the sea breeze at your back offers a sweeping sense of freedom between the islands—an experience not to be forgotten.

Also known as Xiuyu Lighthouse, this was the first Western-style lighthouse built in Taiwan. The white cylindrical tower, paired with coral-stone walls, European-style residences, and lush green lawns, evokes the charm of the Mediterranean. Though modest in size, the grounds feature a heritage museum, fog cannon, and foghorn beacon, each carrying fascinating stories from the past.

Also known as Guipishan, this site reveals an S-shaped pebble path at low tide, resembling the biblical "Moses Parting the Sea." The trail connects to Chi Islet and is one of the signature attractions of the Penghu Marine Geopark. Along the way, visitors can see volcanic dikes and a rich intertidal ecosystem. It is also celebrated as one of the "Eight Scenic Views of Ancient Penghu," known as "Kui Bi Lian Hui," where scenic beauty and tidal walks come together. Please pay attention to tide schedules to ensure safety when exploring.

