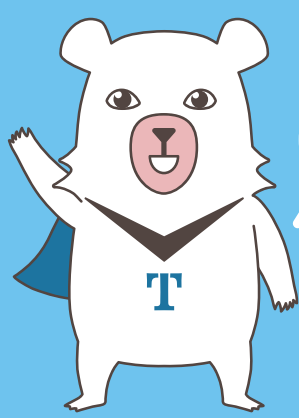


澎湖 空港 快線

Penghu Airport Express Route



Penghu Airport Express
Route for easy and
convenient travel!

Partner Store Promotion

During the promotion period, enjoy
exclusive discounts by presenting
the Taiwan Tourist Shuttle - Penghu
Airport Express Route Ticket when
shopping at partner stores!



List of
Partner Stores

Travel Service Information

Penghu Visitor Center

📍 No. 171, Guanghua Vil., Magong City,
Penghu County

☎ (06)921-6445



Taiwan Tourist Shuttle
Official Website

Penghu South Visitor Center

📍 No. 25, Xinying Rd., Magong City, Penghu County

☎ (06)926-4738

Organizer /

TAIWAN | 台灣好行
TOURIST SHUTTLE

澎湖國家風景區管理處
Penghu National Scenic Area Headquarters, Tourism Administration, M.O.T.C.

Operating Unit /

LION 雄獅通運 LION EXPRESS

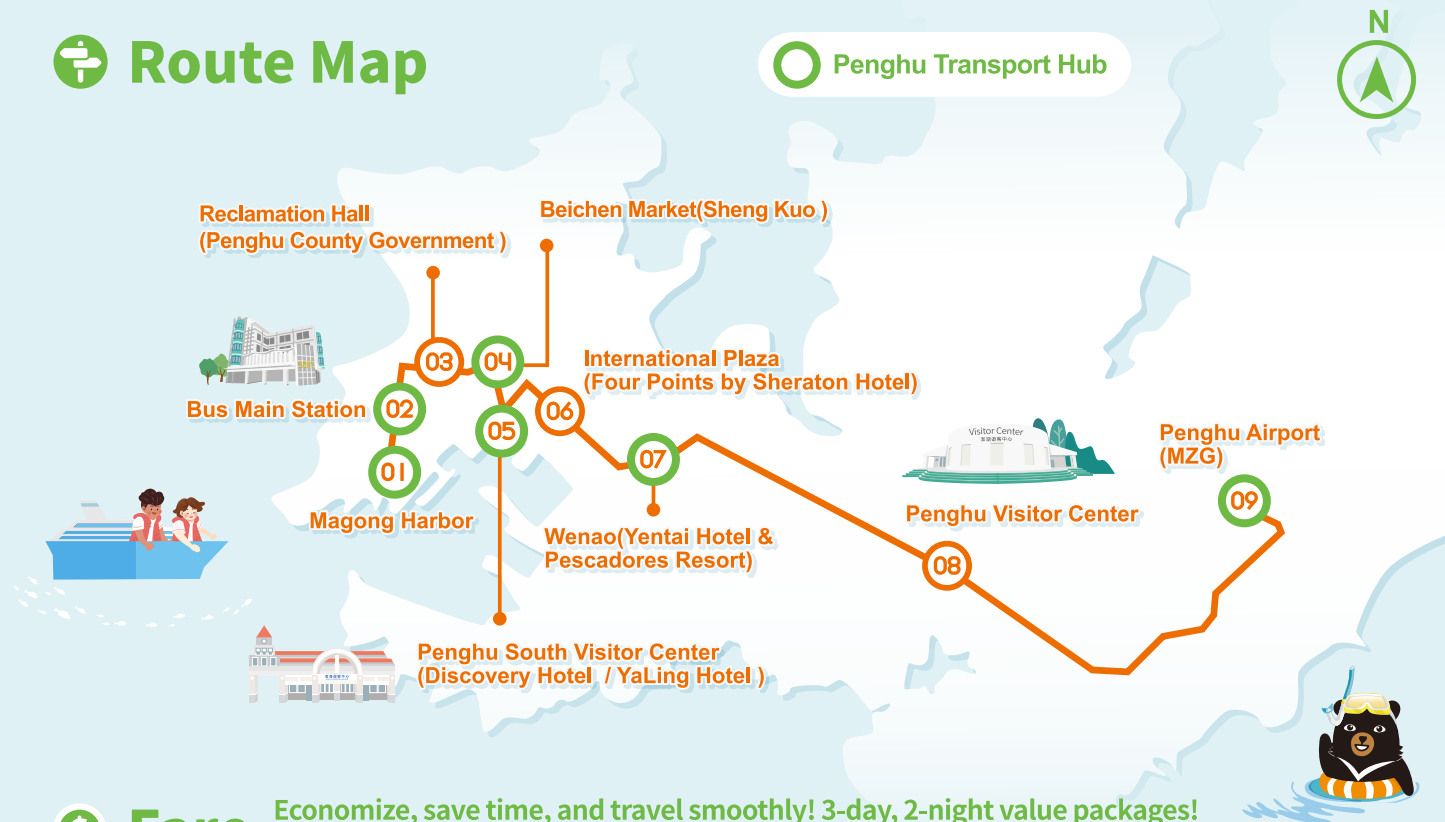
Penghu Airport Express Route Service Hotline /

☎ (06)926-5265 #7328

(02)8793-9288

接受交通部觀光署補助(分攤配合)廣告

Route Map



Fare

Economize, save time, and travel smoothly! 3-day, 2-night value packages!
Explore all the major sightseeing routes in Penghu, start the fun as you land!

A Adventure across the North Ring Line Promotion NT\$ 300

Top choice of all major routes! Visit the Penghu Great Bridge and
Tongliang Great Banyan, come see what Penghu is all about!

Airport Express Route One Day Pass x1

Magong Shuttle Bus North Ring Line One Day Pass x1

B Journey across Huxi Promotion NT\$ 250

Get off the beaten path and explore Huxi at leisure, experience the
perfect blend of nature and culture!

Airport Express Route One Day Pass x1

Magong-Huxi Route One Day Pass x1

Availability | On sale mid-July 2025

Purchase Methods | **Purchase tickets online**, visit the official
websites of Penghufuneasy or Lion Travel to purchase tickets. Pick
up your tickets according to the information on the sales page.

Validity | Ticket packages are valid until June 30, 2026

C Easy Journey across Southern Penghu Promotion NT\$ 200

Feel the sunshine and sea breeze as you travel along the coastline,
enjoy an easy and super chill time in Southern Penghu!

Airport Express Route One Day Pass x1

Magong-Pengnan Line One Day Pass x1

D Express Route One Day Pass NT\$ 100

Unlimited number of rides on the Airport Express Route on the
same day, hassle-free travel between the airport and downtown

Airport Express Route One Day Pass x1



Penghufuneasy



Lion Travel



Taiwan Tourist Shuttle
Official Website



Penghu National
Scenic Area Headquarters,
Tourism Administration,
M.O.T.C.

Timetable

No	Magong Harbor (Estimated Departure Time)	Penghu Airport (MZG) (Estimated Departure Time)
1	07:20	08:00
2	08:00	08:40
3	08:40	09:20
4	09:20	10:00
5	10:00	10:40
6	10:40	11:20
7	11:20	12:00
8	12:00	12:40
9	12:40	13:20
10	13:20	14:00
11	14:00	14:40

No	Magong Harbor (Estimated Departure Time)	Penghu Airport (MZG) (Estimated Departure Time)
12	14:40	15:20
13	15:20	16:00
14	16:00	16:40
15	16:40	17:20
16	17:20	18:00
17	18:00	18:40
18	18:40	19:20
19	19:20	20:00
20	20:00	20:40
21	20:40	21:20
22	21:20	22:00

Oct-Mar Monday~Thursday Bus No. 21 and 22 are suspended.

Fare

one-way ticket NT\$30

Cash accepted on board the bus; passengers with e-tickets

(EasyCard, iPASS, icash) can enjoy a 50% discount

on the fare! (From now until October 31, 2025)



Tourist Map

Magong Guanyinting Recreation Area



- Bus Main Station
- No. 7, Jieshou Rd., Magong City, Penghu County

Facilities at the Magong Guanyinting Recreation Area include a water play area and kids' playgrounds. Visitors can also stroll along the Xiyang Rainbow Bridge, which glows with colorful neon lights every night, creating a splendid sight.



Introduction to Tourist Attractions

Zhongyang Old Street



- Bus Main Station
- Zhongyang St., Magong City, Penghu County

Zhongyang Old Street is one of the earliest streets in Penghu. With its Hokkien-style shopping arcade stretching for hundreds of meters and the 400-year-old Four-Eyed Well, the old street has been designated as a county-level historic site.



Introduction to Tourist Attractions

Penghu Tianhou Temple



- Bus Main Station
- No. 1, Zhengyi St., Magong City, Penghu County
- Daily 07:00-19:00

A national monument, the Penghu Tianhou Temple is known as the oldest temple dedicated to the goddess Mazu in Taiwan. Delicate carvings adorn the interior of the temple. In the past, the locals worshiped Mazu to ensure the safety of sea voyages.



Introduction to Tourist Attractions

Hung ken-shen Art Museum



- Magong Harbor
- No. 15-1, Minzu Rd., Magong City, Penghu County
- Wednesday-Sunday, 09:00-12:00 and 14:00-17:00 (Closed on Mondays, Tuesdays, and public holidays; final entry for visitors is 30 minutes before closing time)

Hung ken-shen (1946-) is a native of Huxi Township, Penghu County. A renowned contemporary ink artist in Taiwan, he has become a major representative of modern ink painting. During Japanese rule, the Penghu Island Military Police Detachment was set up here and renovation also took place. In 2002, the Penghu County Government announced that the site would be registered as a historical building.

Shuencheng Gate



- Magong Harbor
- Nearby No. 2, Fuguo Rd., Magong City, Penghu County

The 6-meter-high Magong Old City Wall was built in the early days of Penghu to defend the city. Nowadays, only the Shuencheng Gate is left intact. The wall was built using a combination of igneous rocks, coral stone, and shell ash found or produced locally, reflecting the characteristics of Penghu.



Introduction to Tourist Attractions

Magong Jinguitou Fortress



- Magong Harbor
- No. 10-2, Juguang Vil., Magong City, Penghu County
- Wednesday-Sunday, 09:00-12:00 and 14:00-17:00 (Closed on Mondays and Tuesdays)

The Magong Jinguitou Fortress is a national monument built in 1887. People who enjoy visiting cultural and historical sites should not miss the well-preserved walls, batteries, and archway near the entrance!



Introduction to Tourist Attractions

Penghu Marine Geopark Center



- International Plaza (Four Points by Sheraton Hotel)
- No. 71, Xinming Rd., Magong City, Penghu County
- Daily 8:00-12:00~13:00-17:00
- (06)926-9737

The Penghu Marine Geopark Center has on display a wealth of information, including the distribution map of Penghu's nature reserves and Mao Islet Seabird Refuge, Penghu's geologic time scale, an exhibit on the theme of rock materials in daily life, as well as introductions on the unique attractions and basalt rock of Penghu.

Penghu Fish Market



- International Plaza (Four Points by Sheraton Hotel)
- No. 158, Xinsheng Rd., Magong City, Penghu County
- Daily 04:00-10:00

The Penghu Fish Market is the largest fish market in Penghu. If you want to find the freshest "three goods of Penghu," the Penghu Fish Market should definitely be on your itinerary.

South Sea Transportation & Tourism Waiting Room



- Penghu South Visitor Center (Discovery Hotel / YaLing Hotel)
- South Sea Transportation Wharf, Magong City, Penghu County
- Daily 09:00-16:30

(攝影/YHLAA李易暹)

The South Sea Transportation & Tourism Waiting Room offers sailings to the islands of Qimei and Wang'an as well as Kaohsiung City.

South Sea Visitor Center



- Penghu South Visitor Center (Discovery Hotel / YaLing Hotel)
- No. 25, Xinying Rd., Magong City, Penghu County
- Daily 06:30-17:00

The South Sea Visitor Center offers sailings to and from the islands of Qimei, Wang'an, Hujing, Tongpan, Huayu, and Jiangjun'ao, as well as the four islands of southern Penghu. The center serves as the transportation hub for travel between the islands in the south sea of Penghu.



Introduction to Tourist Attractions

Beichen Market



- Beichen Market (Sheng Kuo)
- No. 20, Beichen St., Magong City, Penghu County
- Every morning

The Beichen Market is the largest market in Penghu, offering a variety of local specialties. You can enjoy authentic local food on a breakfast tour in the morning.

Magong Duxing 10th Village



- Magong Harbor
- No. 22, Ln. 2, Xinfu Rd., Magong City, Penghu County
- Daily 09:00-18:00 (Business hours may vary in accordance with the season)

Magong Duxing 10th Village used to be the barracks for soldiers who served on the Penghu Islands during the Japanese colonial period. It was later converted into a cultural and creative park. Besides a selection of cafés and shops that sell handicrafts and artworks.



Introduction to Tourist Attractions

Penghu Museum of Life



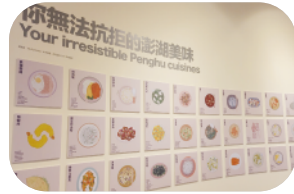
- International Plaza (Four Points by Sheraton Hotel)
- No. 327, Xinsheng Rd., Magong City, Penghu County
- Daily 09:00-16:30 (Closed on Thursdays)

As the first city museum in Taiwan, Penghu Museum of Life intrigues visitors by explaining the culture and history of Penghu with different types of multimedia, including the use of real specimens, ecological landscaping, models, and light and sound effects.



Introduction to Tourist Attractions

Penghu Visitor Center



- Penghu Visitor Center
- No. 171, Guanghua Vil., Magong City, Penghu County
- Daily 08:00-17:30

Tourist information can be found at the Penghu Visitor Center, which introduces the distinctive cuisine, festivals, and local culture of Penghu. Travelers visiting Penghu are welcome to make their way to the center first and learn more about the history and culture of Penghu.



Introduction to Tourist Attractions

Residence of Scholar Cai Ting-Nan



- Penghu Visitor Center
- No. 29, Shuangtougua, Magong City, Penghu County
- Daily 09:00-17:00 (Closed on Wednesdays)

In 1845, Cai Ting-Nan became the first and only jinshi, an imperial scholar, of Penghu. After returning to his hometown as a scholar, he built a new residence right next to his old one.



Introduction to Tourist Attractions

One-Day Tour Travel Guide

Do you prefer to feast on seafood and admire historic monuments downtown? Or would you like to go on an island-hopping boat excursion and feel the warm sunshine of Penghu? You can do all of this by simply taking the Penghu Airport Express Route! Let the Penghu Airport Express Route become the starting point of your Penghu one-day tour. Enjoy all that Penghu has to offer in the most convenient way!

One-Day Downtown Cultural Tour

Morning: explore around Magong Harbor Stop, walk to Zhongyang Old Street, Tianhou Temple, Hung ken-shen Art Museum, and Magong Duxing 10th Village → **12:00 Magong Harbor Stop** → 12:04 South Sea Visitor Center (Discovery Hotel, Yaling Hotel) Stop, walk to the nearby restaurants for a meal, buy souvenirs along the way → **14:04 South Sea Visitor Center (Discovery Hotel, Yaling Hotel) Stop** → 14:05 International Plaza (Four Points by Sheraton) Stop, walk to Penghu Museum of Life and Penghu Marine Geopark Center → **17:29 International Plaza (Four Points by Sheraton) Stop** → 17:40 Magong Harbor Stop

Endless Wonders from Day to Night Tour

08:00 Magong Harbor Stop → 08:03 Beichen Market (Sengguo) Stop, walk to Wenkang Street and enjoy breakfast → **10:43 Beichen Market (Sheng Kuo Hotel) Stop** → 10:50 Penghu Visitor Center Stop, walk to the Penghu Visitor Center and the Residence of Scholar Cai Ting-Nan → **13:23 Penghu Tourist Center Station** → 13:30 South Sea Visitor Center (Discovery Hotel, Yaling Hotel) Stop, walk to Pier 3 Profound Duty Free Shopping Mall to have lunch → **15:30 South Sea Visitor Center (Discovery Hotel, Yaling Hotel) Stop** → 15:33 Bus Main Station, walk around the area and enjoy snacks or explore specialty coffee shops

★These are the estimated departure times. Please go wait at the stops 5-10 minutes in advance.

